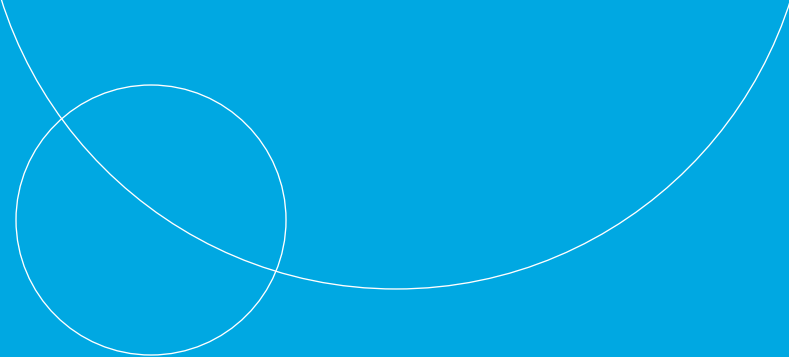




rnl national conference
leading ai innovation
empowering higher education



Trying, Testing, and Transforming: Executing a Persistence Model to Improve Student Retention

Dr. Jan Clayton – Interim President, Tarrant County College – Northeast Campus
Angela C. White – Director of TCC T3 Program, Tarrant County College

Presentation Outline

1. Tarrant To and Through (T3) Overview

- About the T3 Partnership
- Main Goals

2. TCC T3 Persistence Model

- Best Practices

3. Brainstorming Persistence Strategies

Primary Learning Outcomes

1. Participants will be able to describe core components of the Tarrant To and Through (T3) program at Tarrant County College and impact through data.
2. Participants will be able to identify key recommendations regarding persistence through the higher education literature.
3. Participants will develop persistence strategies to apply to the student learning experience in and outside of the classroom.

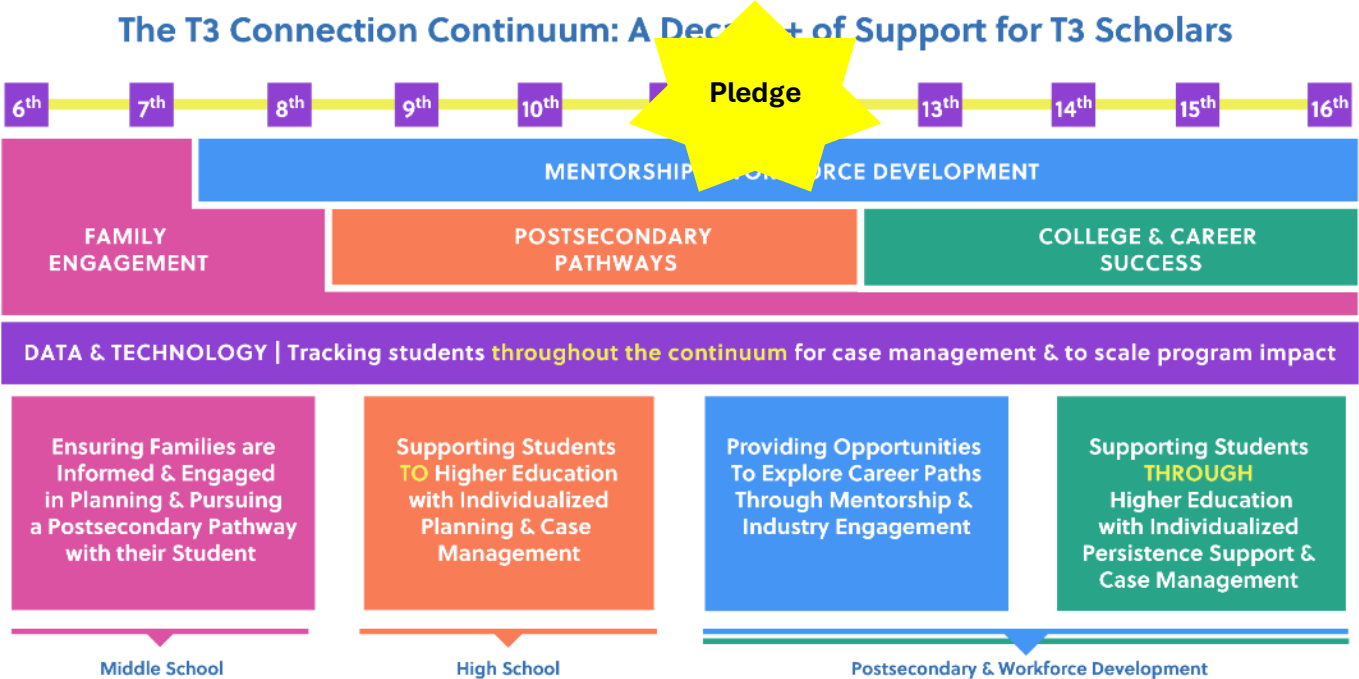


Tarrant To and Through (T3) Partnership



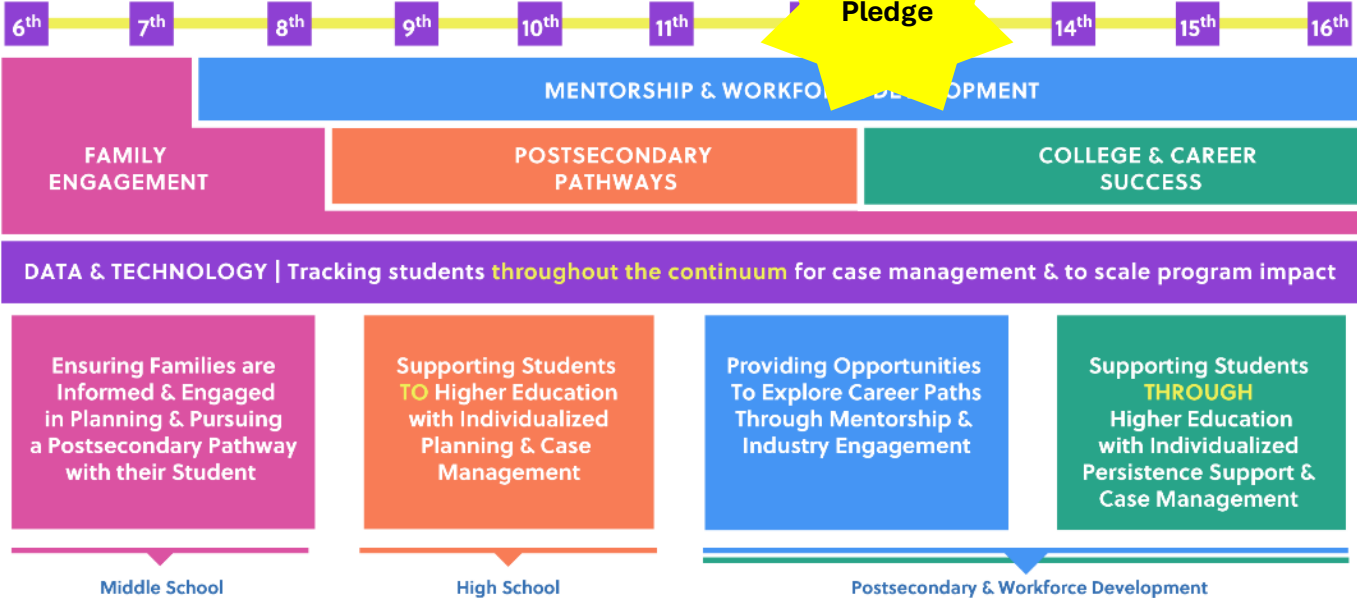
Tarrant To and Through (T3) Overview

The T3 Connection Continuum: A Decade + of Support for T3 Scholars

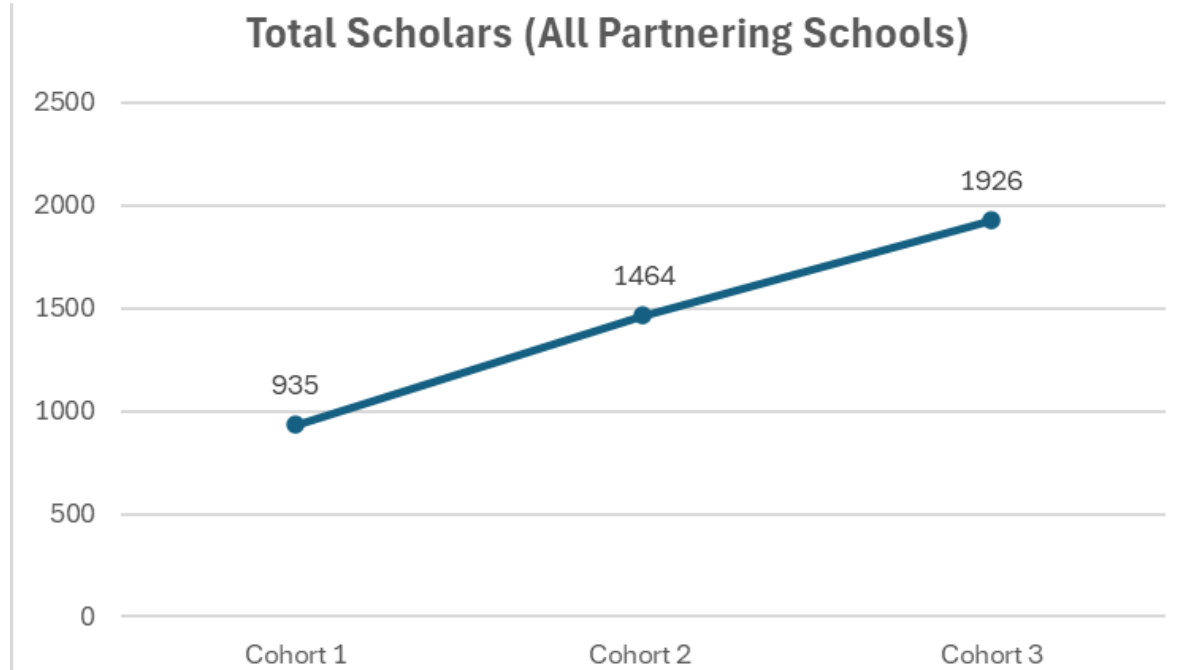


Tarrant To and Through (T3) Overview

The T3 Connection Continuum: A Decade+ of Support for T3 Scholars



Tarrant To and Through (T3) Overview



T3's Main Goals

- Graduating more students from high school who are College, Career, and Military Ready (CCMR)
- Helping more students enroll in a postsecondary pathway with confidence
- Empowering more students to persist and earn a degree or credential and enter the workforce prepared for a successful career



TCC | Tarrant
County
College
SUCCESS WITHIN REACH.

The TCC T3 Program

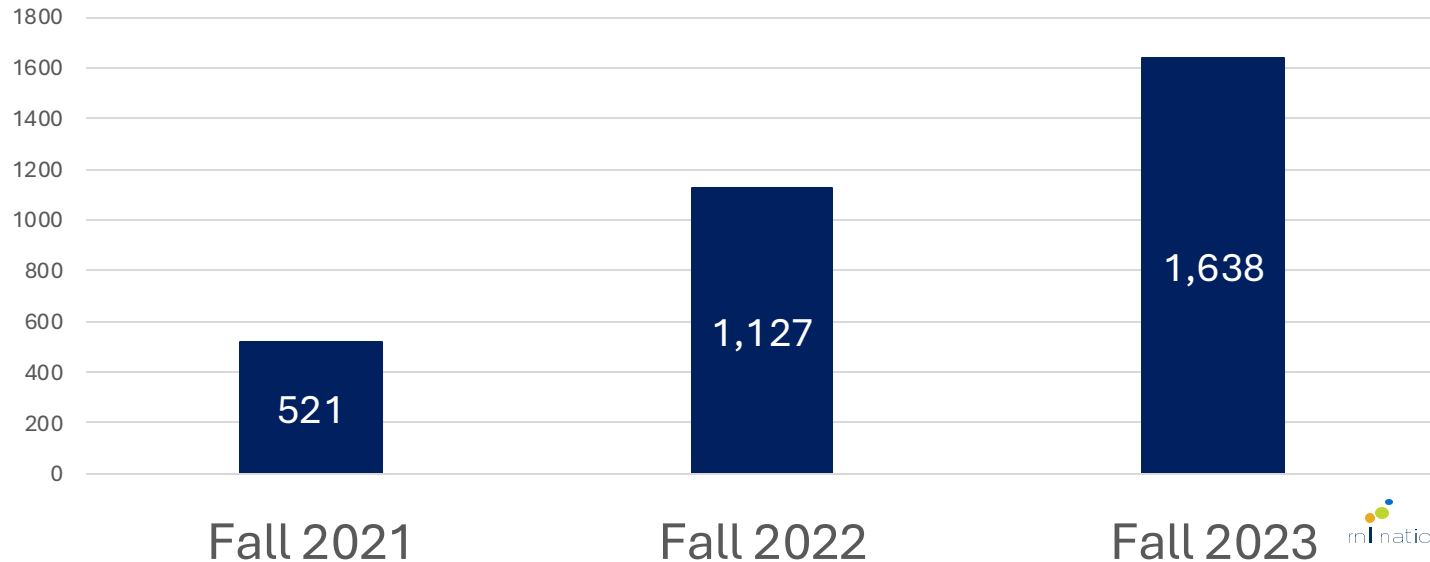


TCC T3 Mission Statement

The TCC T3 program supports and empowers learners by providing **academic, social, and financial** resources throughout their educational journey to help T3 Trailblazers to **overcome barriers** and **achieve their personal and professional goals.**

T3 Trailblazer Enrollment

T3 Trailblazer Fall Enrollment
(Census Date)



Tarrant County College T3 Scholar Persistence Model

Description: Academic, Financial Wellness and Socio-emotional programming, services, and resources plan to support student success and completion for T3 Scholars.

1st Semester

Required:

- Career Assessment
- Academic Advising/Transfer Advising*
- CSI Assessment
- SENSE Assessment
- Financial Wellness Co-Curricular Activity
- Socio-Emotional Co-Curricular Activity
- T3 Scholar Campus Event (T3 Scholar Breakfast with the President)
- Enrollment in STSC and/or EDUC Course
- Peer Mentor Check-in (2)
- Enrollment in Non-Credit T3 Scholar Course

Supplemental:

- Co-curricular Activities
- DEI curriculum
- Additional Peer Mentor Check-ins
- Community Service Opportunities
- T3 Scholar Graduation Event
- T3 Transfer Universities Event
- Additional Persistence Resources (e.g., TRIO, Family Empowerment Center, Stay the Course, etc.)

2nd Semester (and Beyond)

Required:

- Career Advising
- Academic Advising/Transfer Advising*
- CCSSE Assessment
- Financial Wellness Co-Curricular Activity
- Socio-Emotional Co-Curricular Activity
- T3 Scholar All College Event (Community Service & Social Engagement one-day event)
- Peer Mentor Check-in (2)
- Enrollment in Non-Credit T3 Scholar Course

Supplemental:

- Co-curricular Activities
- DEI curriculum
- Additional Peer Mentor Check-ins
- Community Service Opportunities
- T3 Scholar Graduation Event
- T3 Transfer Universities Event
- Additional Persistence Resources (e.g., TRIO, Family Empowerment Center, Stay the Course, etc.)

Summer Semesters

- Summer Bridge Program Peer Mentor (subject to eligibility)
- Summer Enrichment Experience (e.g., Conference, Retreat, Lunch and Learn)

TCC T3 Persistence Coaches



Persistence Best Practice: Promoting Self-Efficacy

Summer Bridge Program

- In person, 2-day sessions
- Games, workshops, transfer/resource fair, student panel
- 96% of attendees reported increased knowledge of transitional skills and tools
- 96% of attendees reported that they believe they belong in college



Persistence Best Practice: Sense of Belonging

President's Leadership Dinners, T3 Semester Bash

- 74% of students who attended the T3 Semester Bash strongly agreed that they have a stronger sense of belonging on campus
- 74% of students who attended a President's Leadership Dinner felt more comfortable initiating conversations



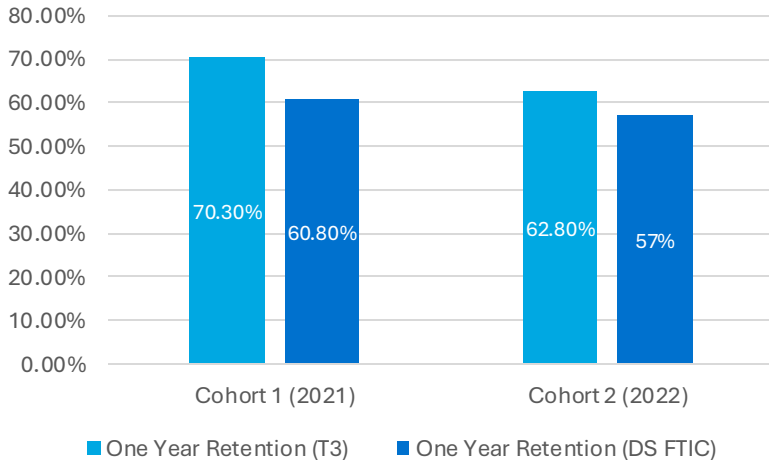
Persistence Best Practice: Perceived Value of the Curriculum

Trailblazer Roundups; Title V Career Advisors

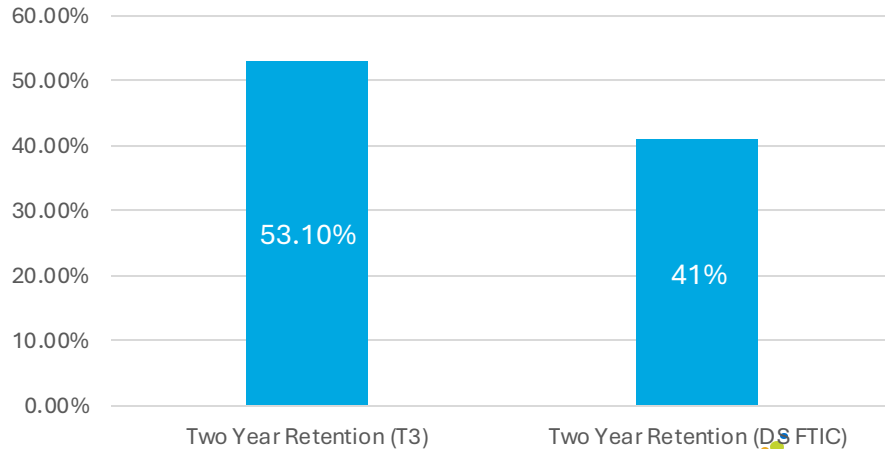


T3 Trailblazer Retention Data

One- Year Retention Rates (T3 Trailblazers vs DS FTIC Students)



Two- Year Retention Rates (T3 Trailblazers vs DS FTIC Students)





TCC | Tarrant
County
College
SUCCESS WITHIN REACH.

Brainstorming Persistence Strategies



Where can you make an impact?

- Academic
- Social
- Financial
- Tactical



Who can you collaborate with?

- Where can you break out of your silo?
- How can you integrate collaboration into the flow of your work?



References

Goman, C. K., PhD. (2017, July 11). Six crucial behaviors of collaborative Leaders. Forbes.
<https://www.forbes.com/sites/carolkinseygoman/2017/07/11/six-crucial-behaviors-of-collaborative-leaders/?sh=53a3294a8cbe>

How to improve student persistence and completion (essay). (2016, September 26). Inside Higher Ed | Higher Education News, Events and Jobs.
<https://www.insidehighered.com/views/2016/09/26/how-improve-student-persistence-and-completion-essay?width=775&height=500&iframe=true>

T3 Persistence Guide. IHE & Program Planning for 2021-2022

Thank You!



Dr. Jan Clayton

Interim President
Tarrant County College – Northeast
Campus



Angela C. White

TCCT3 Director
Tarrant County College



All material in this presentation, including text and images, is the property of RNL. Permission is required to reproduce information.





rnl national conference
leading ai innovation
empowering higher education

Dallas, Texas | July 23-25, 2024